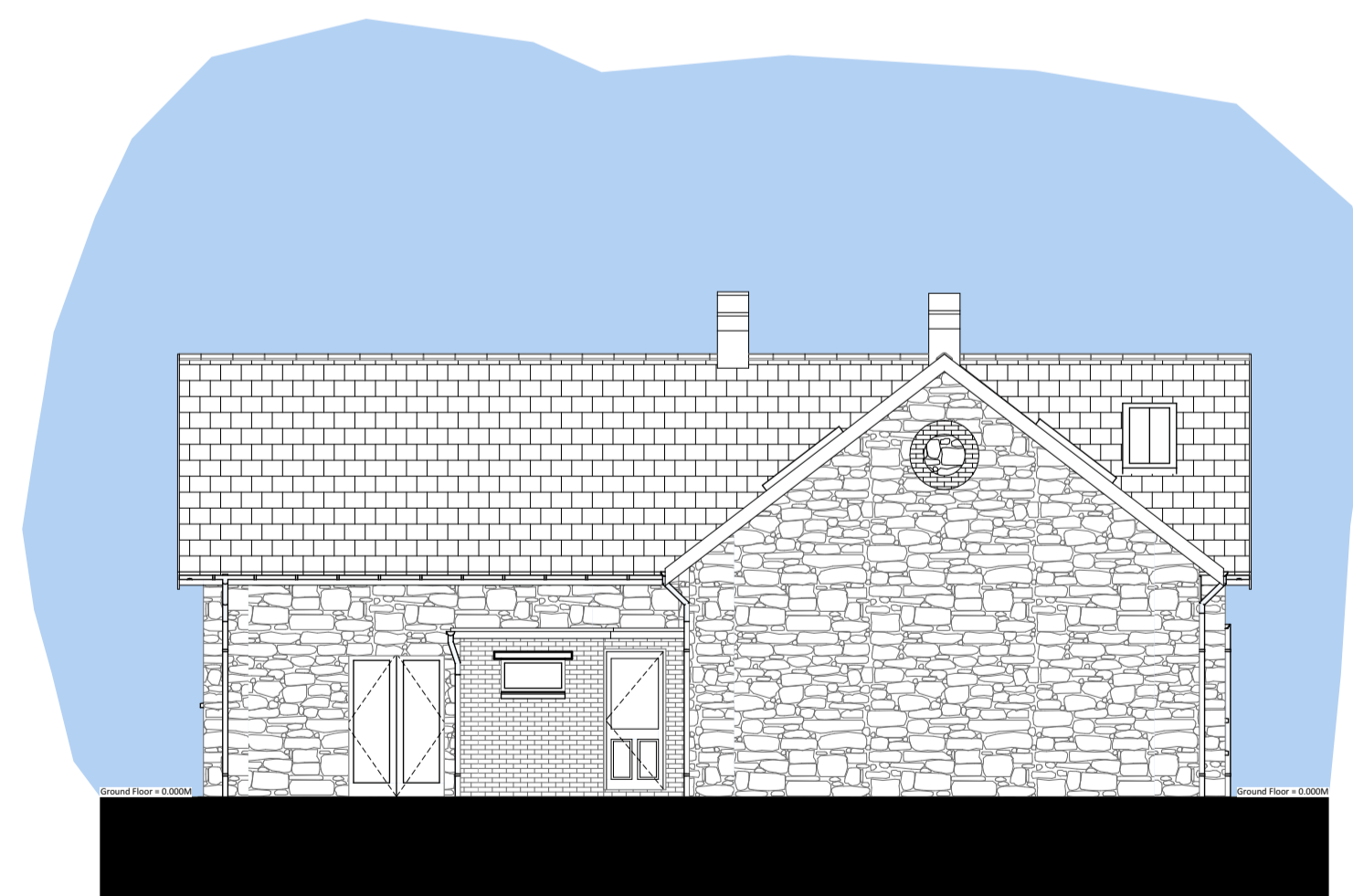
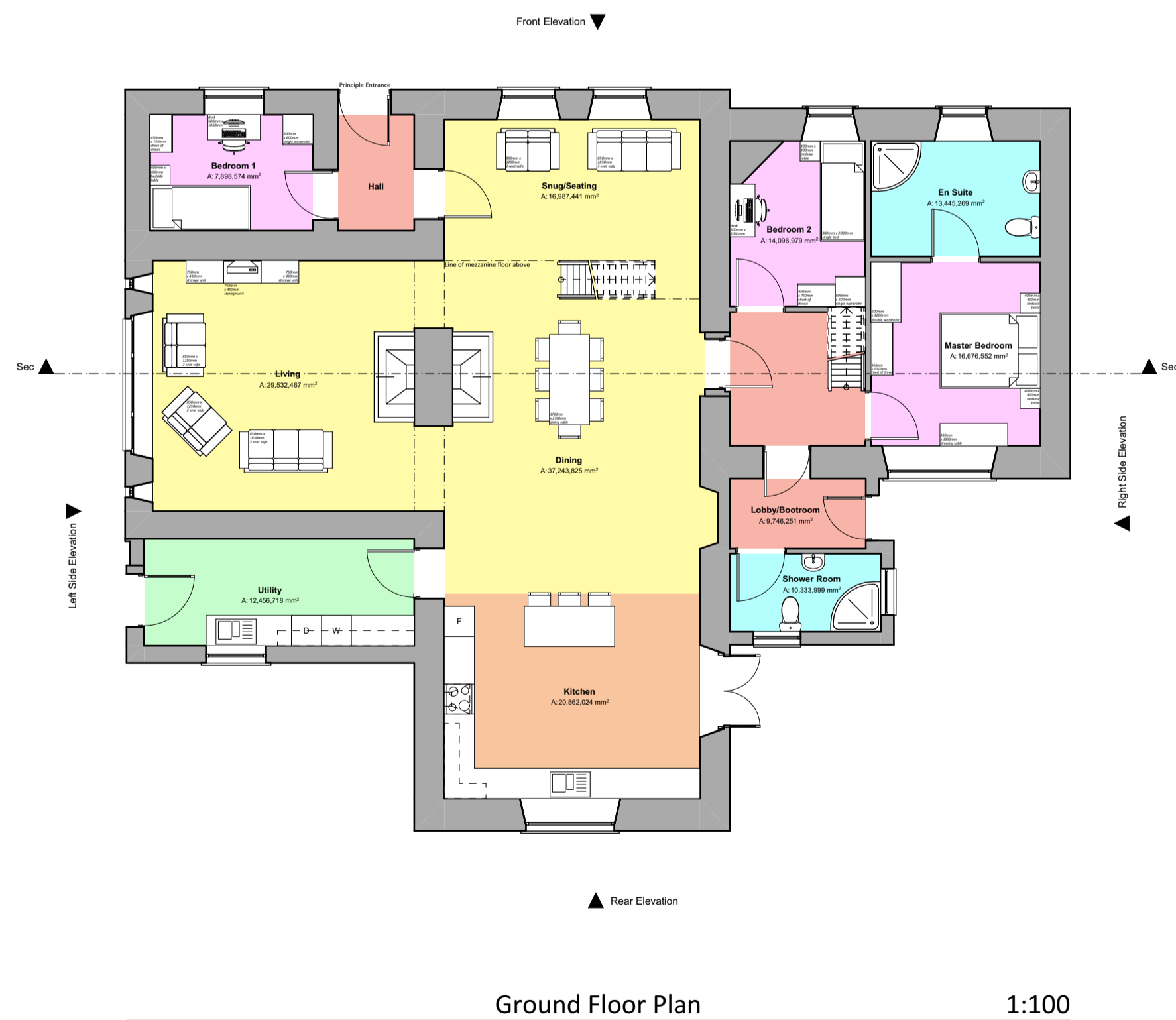
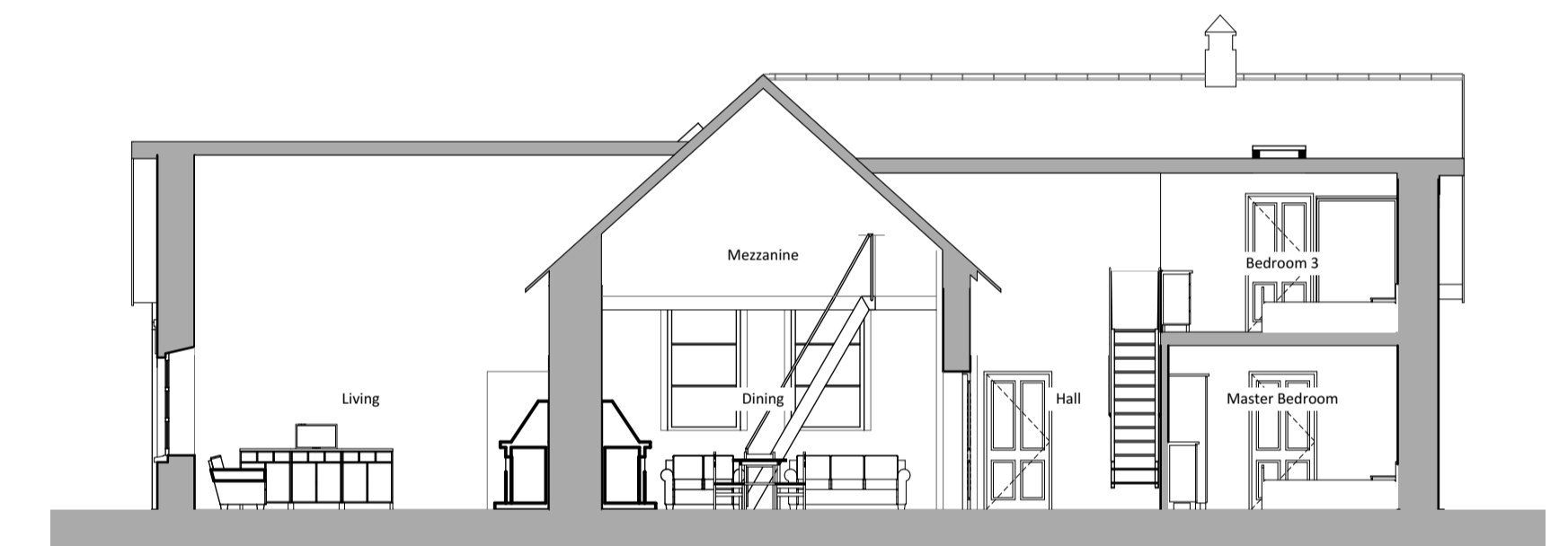


Areas:	
Gross Internal Ground Floor Area	= 185.253m ² (1994.046sqft)
Gross Internal First Floor Area	= 50.715m ² (545.891sqft)
Total Gross Internal Floor Area	= 235.968m ² (2539.937sqft)



Revision:	Date:	By:	Notes:

16 Main Street,
Fishguard,
Pembrokeshire,
SA48 9JU
01348 635004/06
design@rlharchitectural.com
www.rlharchitectural.com

barcud.cymru

Client: Barcud Housing	Scale: Noted Date: Aug '21 Drawn: KL/MG	Drawing Title: SKETCH SCHEME DRAWINGS - Former Coedmor CP School - Elevations & Elevation
Job Title: Former Coedmore CP School, Cwmann, Lampeter SA48 8ET	R533-SK-13	