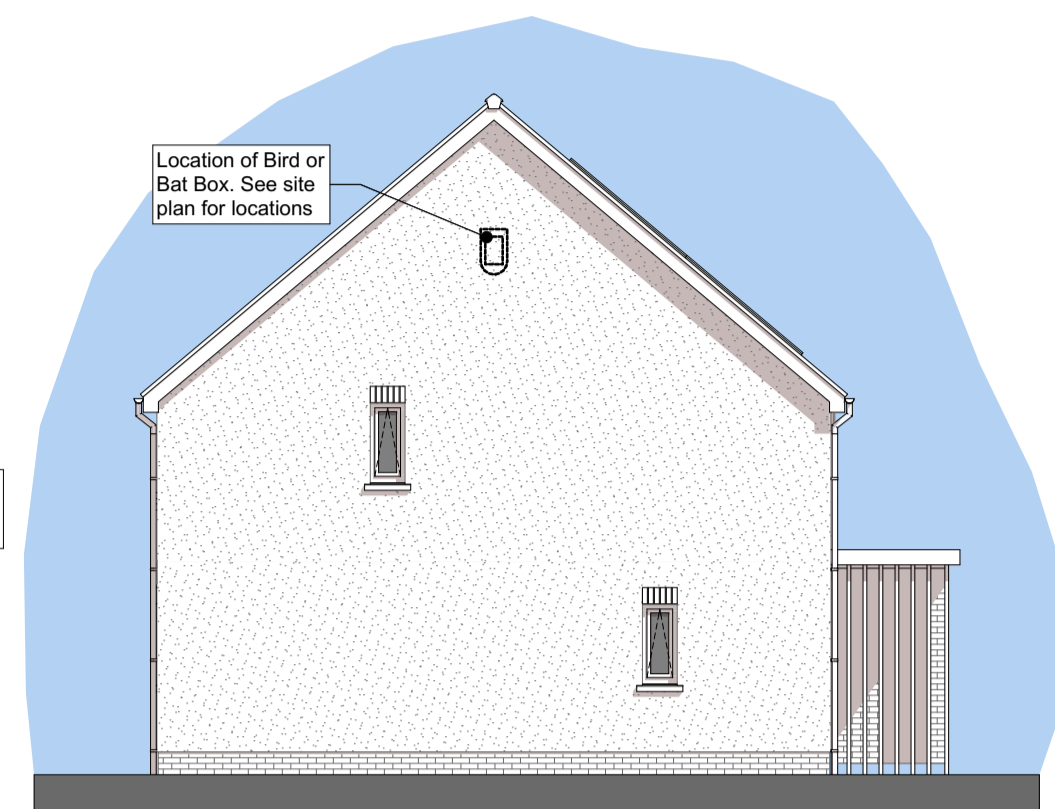


Former Coedmore CP School, Cwmann, Lampeter SA48 8ET

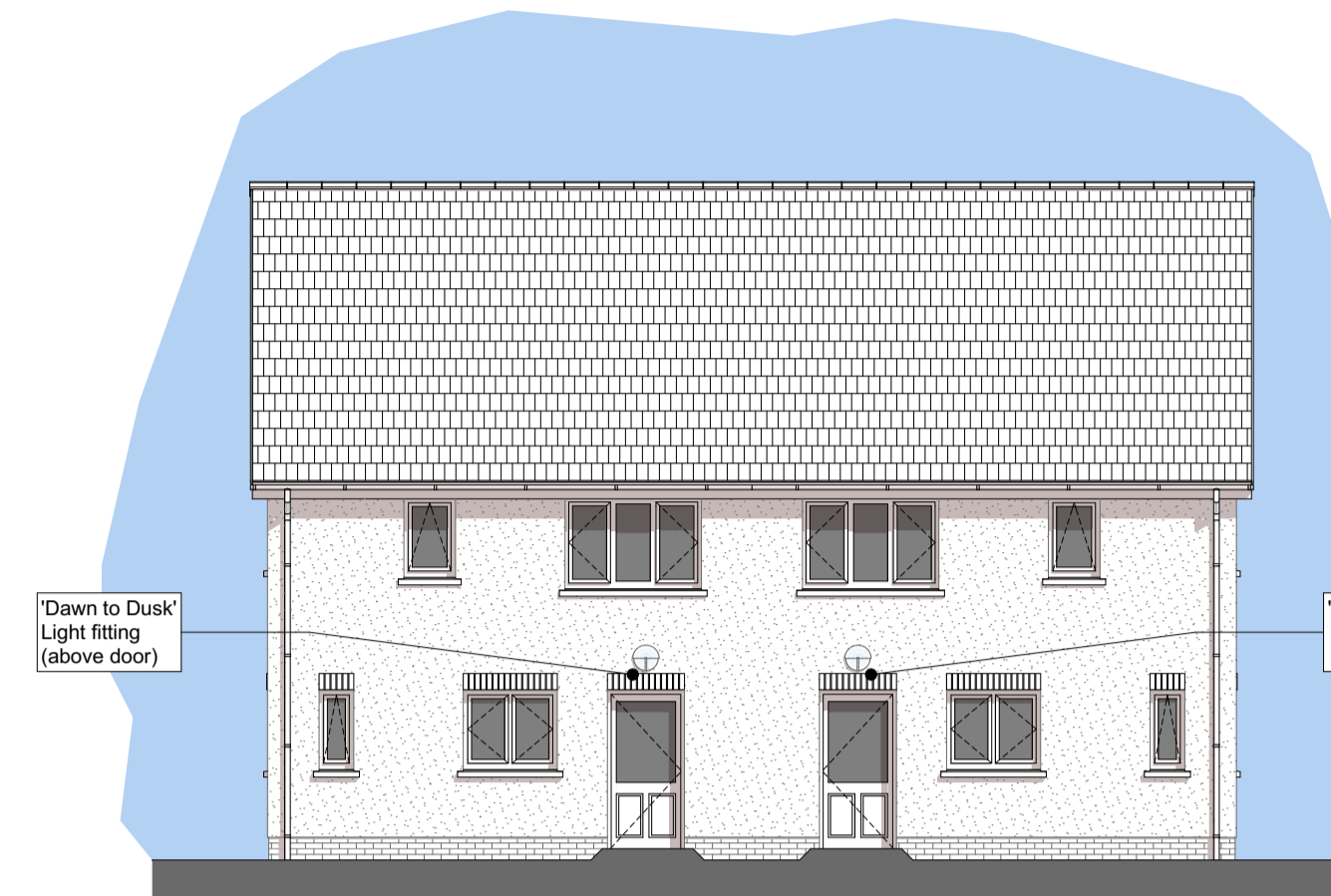
"Sketch Scheme Drawings" - 5P3B Semi-Detached House



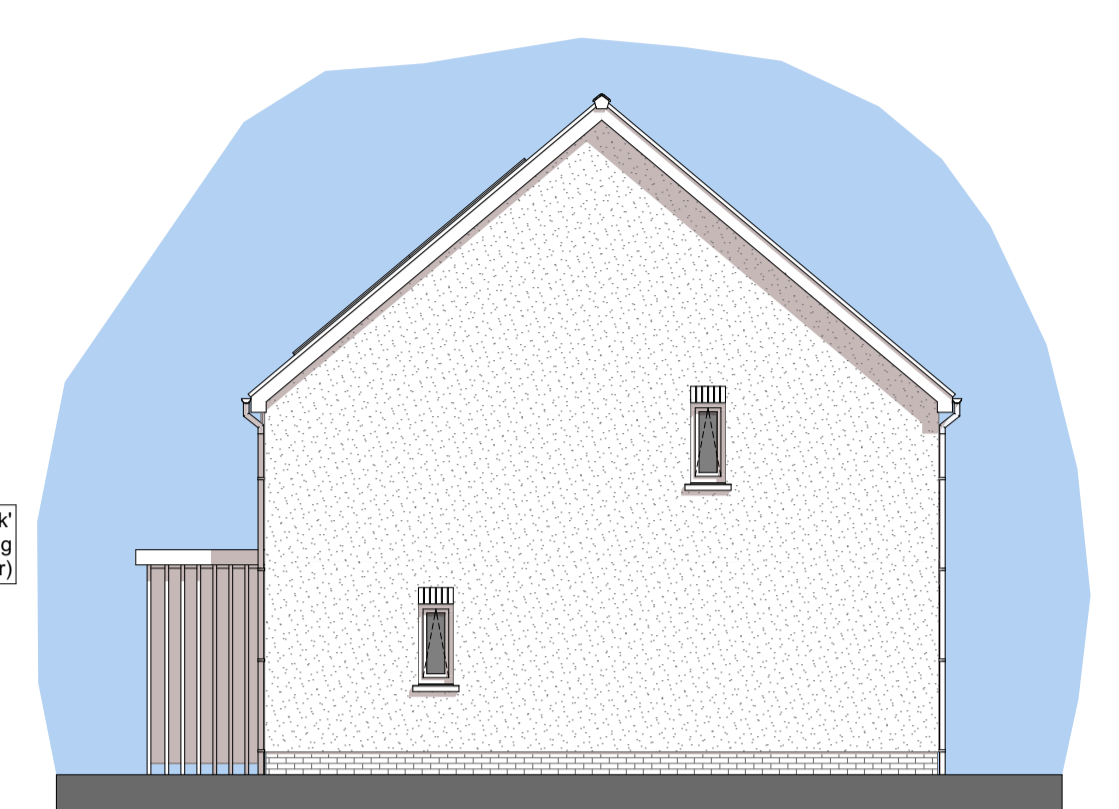
Front Elevation 1:100



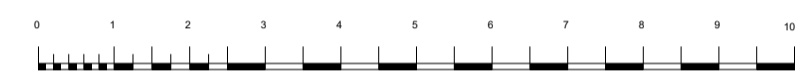
Left-Side Elevation 1:100



Rear Elevation 1:100



Right-Side Elevation 1:100



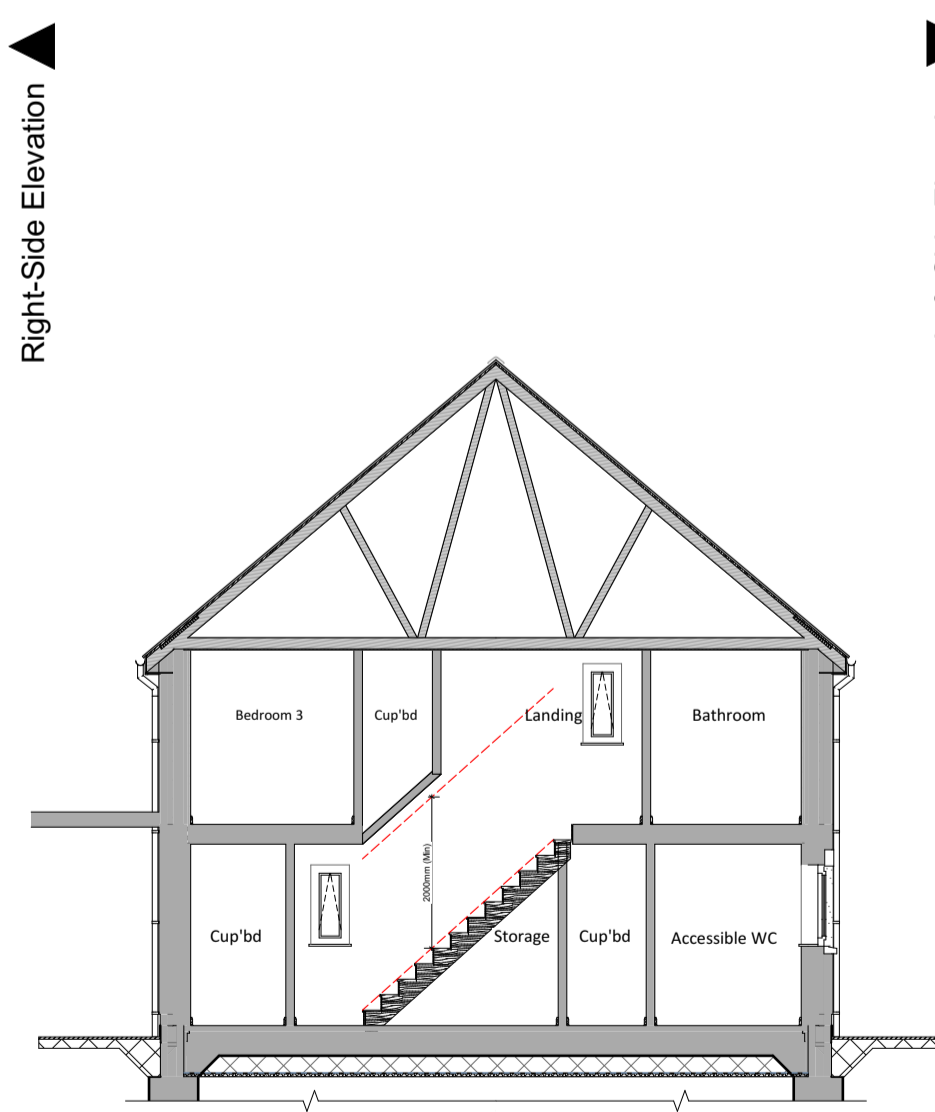
Ground Floor Plan 1:50

Floor Areas:

Total Gross Internal Ground Floor Area = 47.262m² (508.723sqft)
 Total Gross Internal First Floor Area = 47.262m² (508.723sqft)
 Total Gross Internal Area = 94.524m² (1017.446sqft)

Storage Areas:
 (Storage areas highlighted in light green colour)

[Required Storage Space = 2.5m²]
 Ground Floor Storage Area = 2.05m²
 First Floor Storage Area = 1.10m²
 Total dwelling Storage Area = 3.15m²



Building Section 1:100



First Floor Plan 1:50



Revision:	Date:	By:	Notes:

Notes:
 1. To be read in conjunction with 'proposed house type & site external finishes drawing' dwg. no. R533 SK-**.

Client: Barcud Housing
 Scale: Noted
 Date: June '21
 Drawn: SP/RH
 Drawing Title: SKETCH SCHEME DRAWINGS - 5P3B APH 93.8M² - Floor plans, Elevations & Section
R533-SK09-