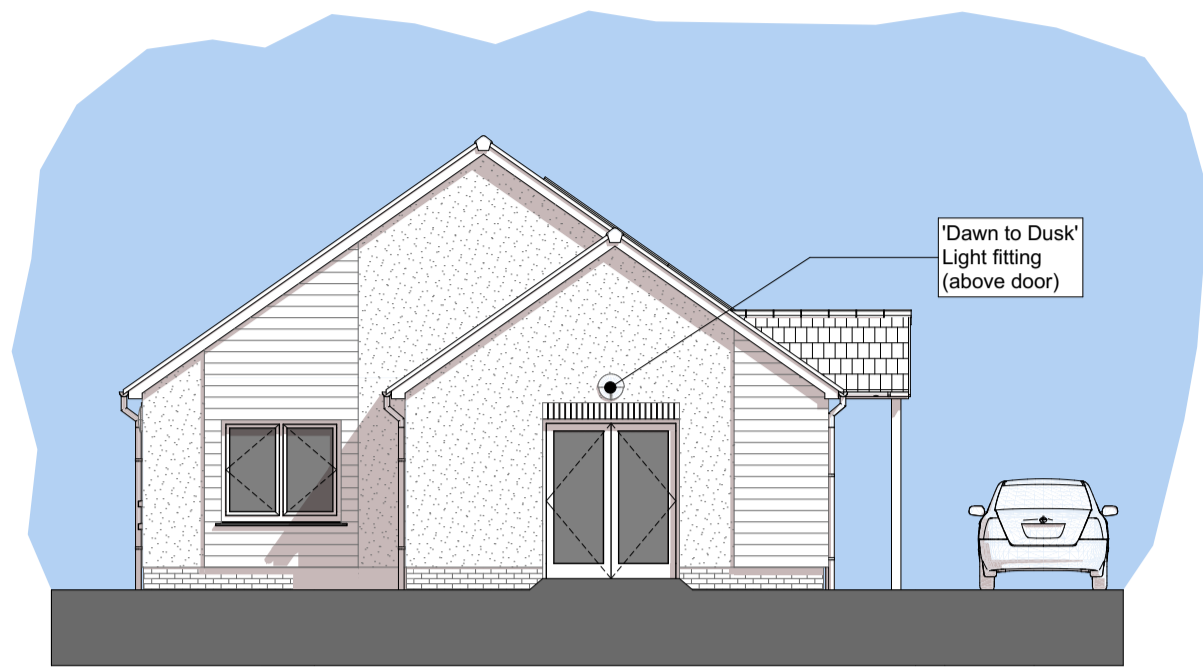
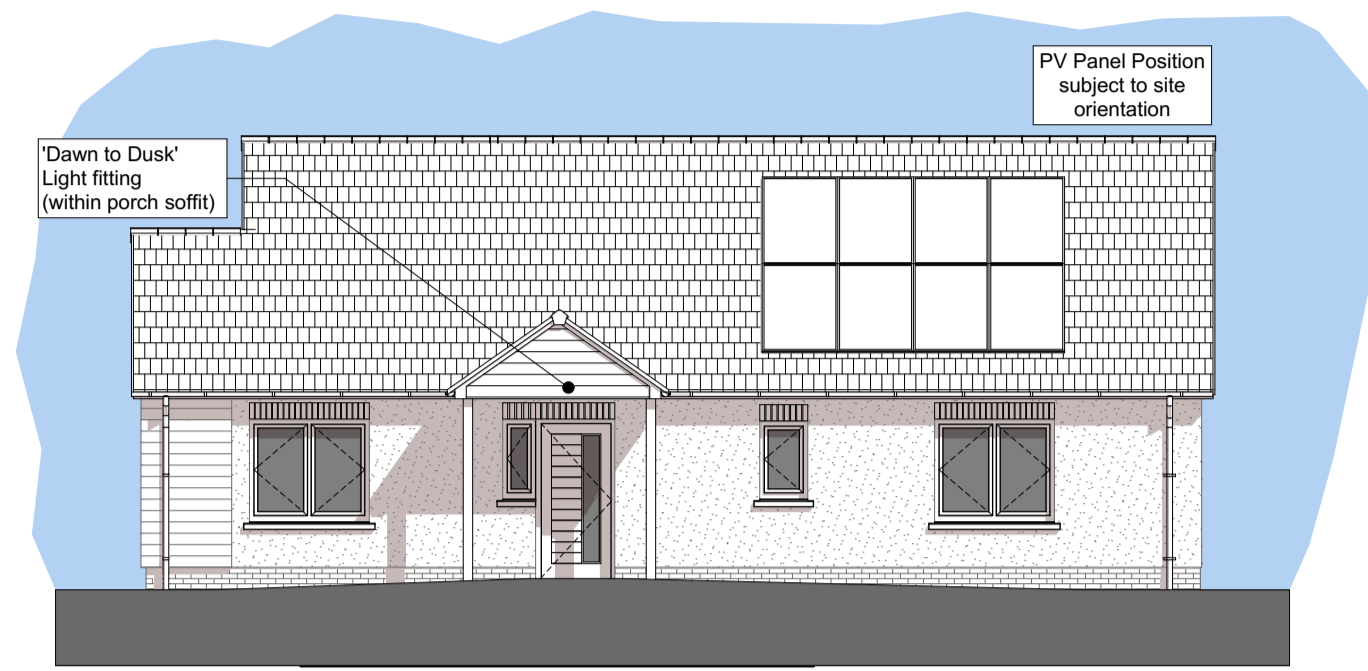
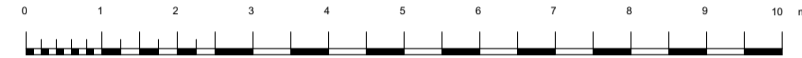


# Former Coedmore CP School, Cwmann, Lampeter SA48 8ET

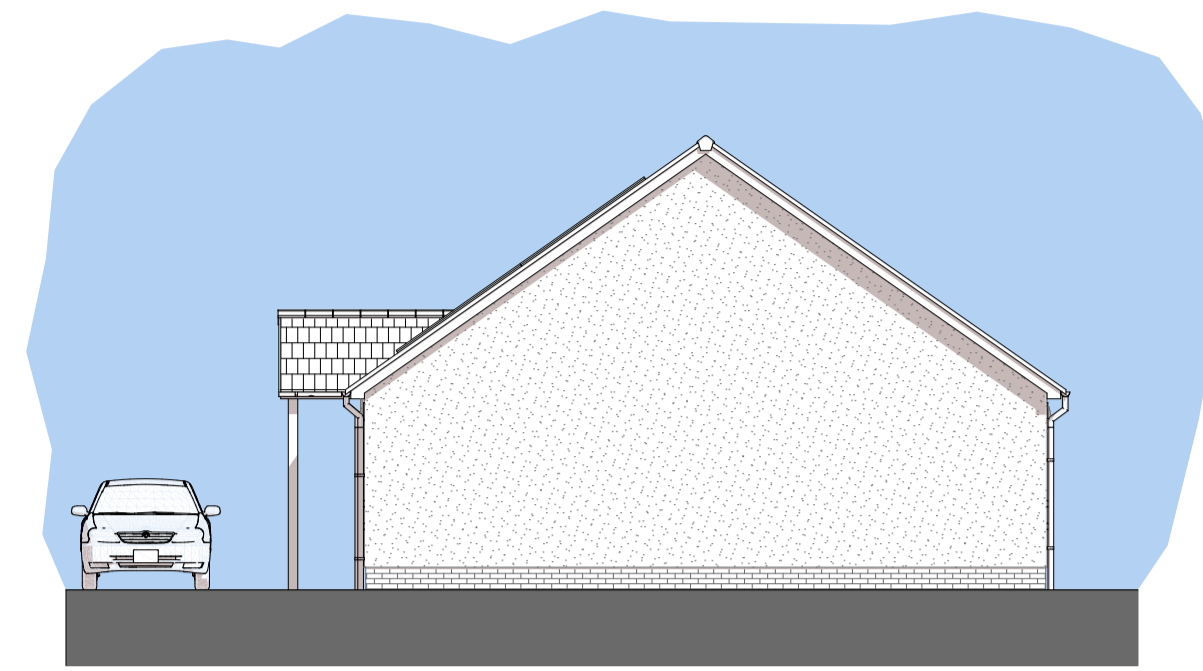
## "Sketch Scheme Drawings" - 4P2B Disabled Detached Bungalow



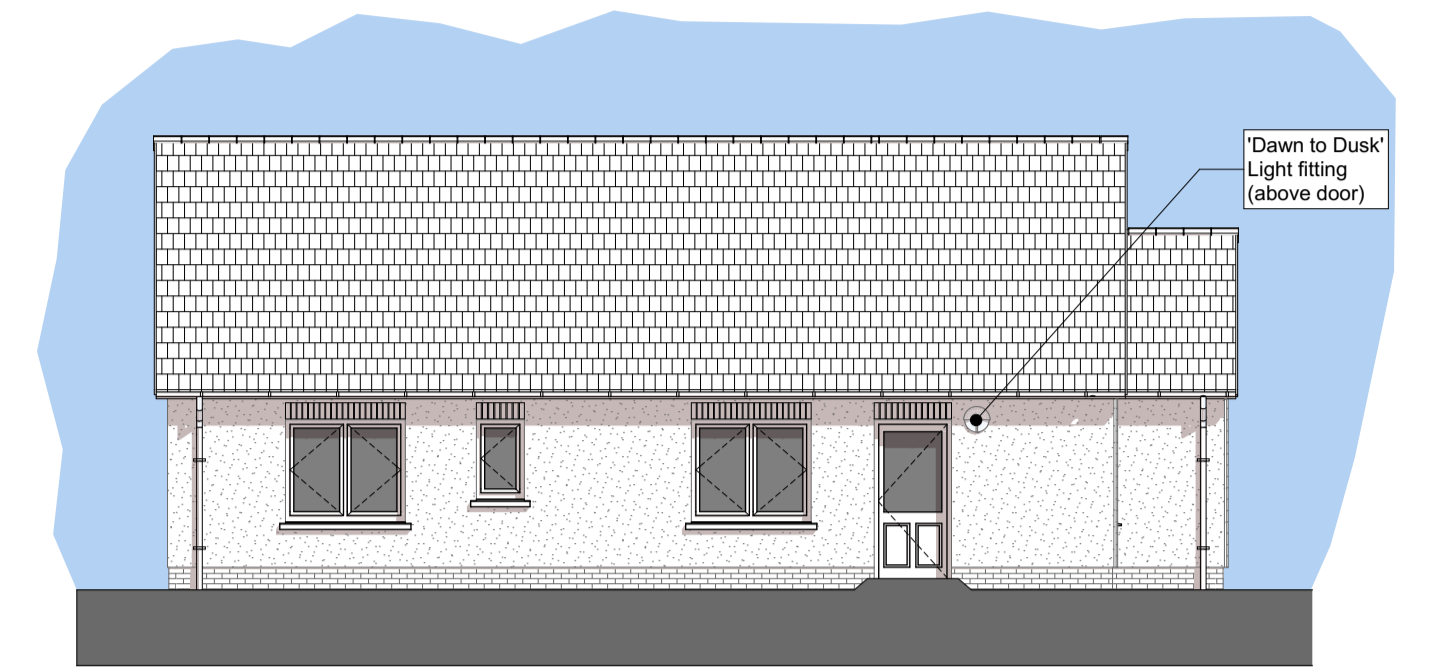
Left Side Elevation 1:100



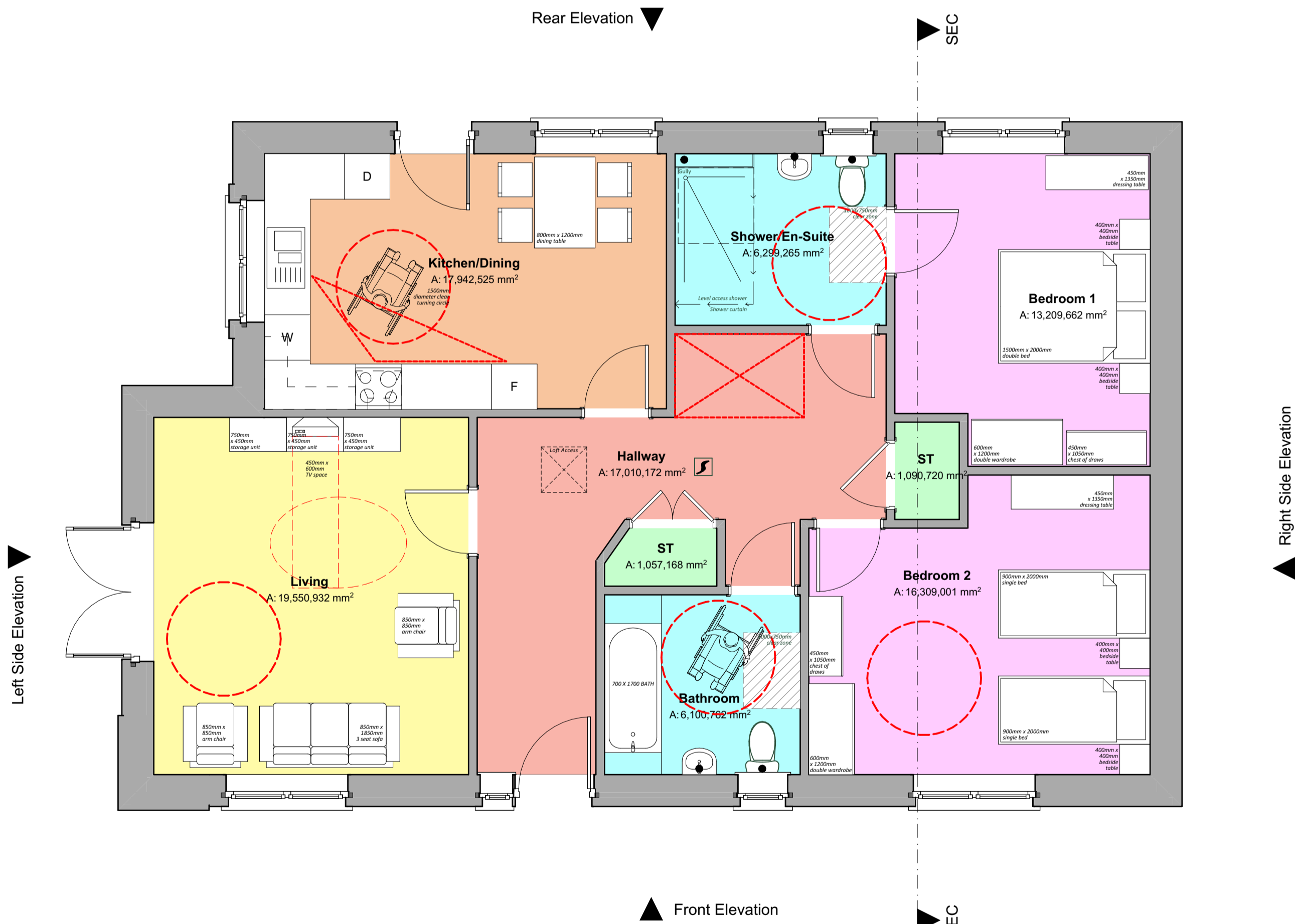
Front Elevation 1:100



Right Side Elevation 1:100



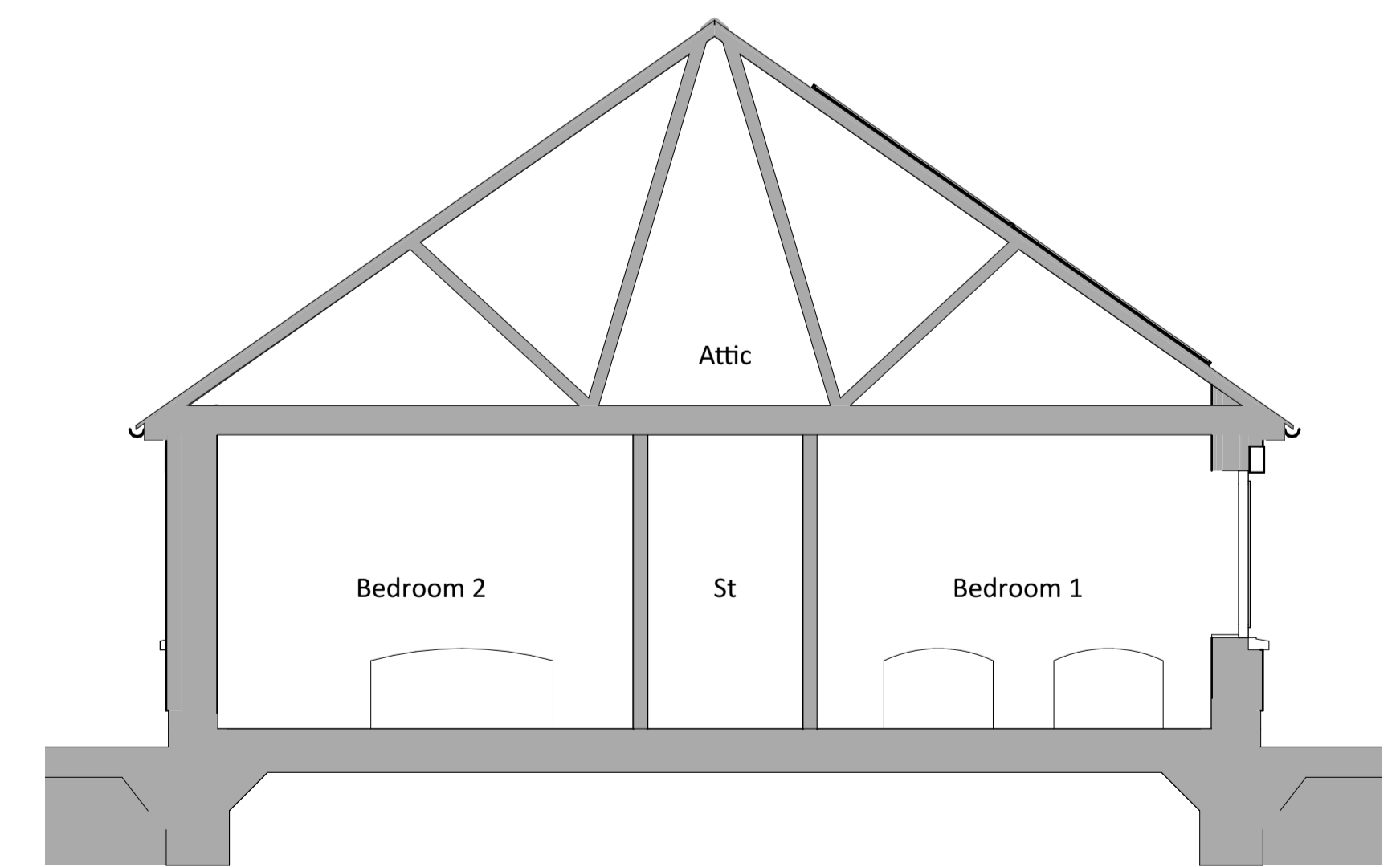
Rear Elevation 1:100



Ground Floor Plan 1:50



<b>Areas:</b>
Gross Internal Ground Floor Area = 102.488m <sup>2</sup> (1103.171sqft)
Total Gross Internal Floor Area = 102.488m <sup>2</sup> (1103.171sqft)
<b>Storage Areas:</b> (Storage areas highlighted in light green colour)
[ Required Storage Space = 2.5m <sup>3</sup> ]
Ground Floor Storage Area = 2.507m <sup>2</sup>
Total dwelling Storage Area = 2.507m <sup>2</sup>



A-A Building Section 1:50



Revision:	Date:	By:	Notes:
			1. To be read in conjunction with 'proposed house type & site external finishes drawing' dwg. no. R533 SK-**.

Client: Barcud Housing	Scale: Noted Date: July '21 Drawn: KL/MG	Drawing Title: SKETCH SCHEME DRAWINGS - 4P2B 102.5M <sup>2</sup> Dis Detached Bung. Floor Plan, Elevations & Section
Job Title: Former Coedmore CP School, Cwmann, Lampeter SA48 8ET	<b>R533-SK07-</b>	