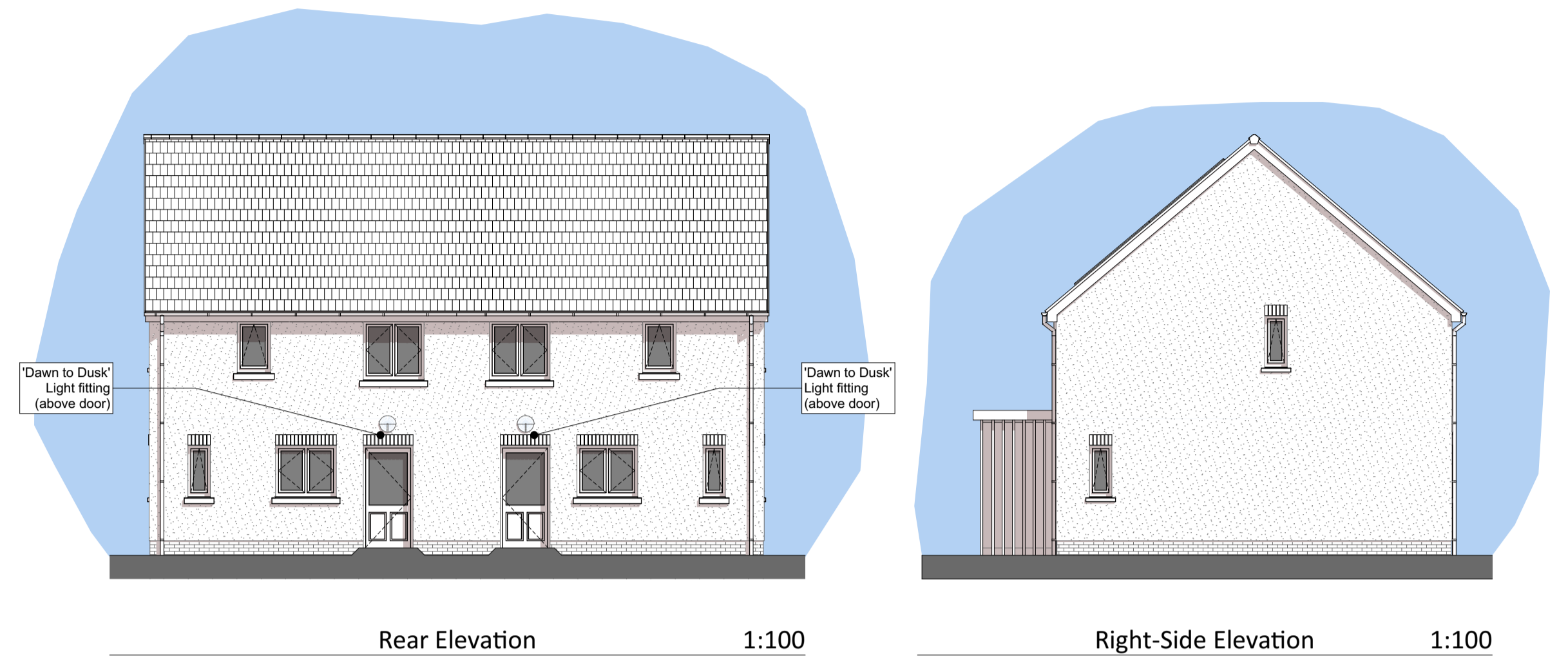
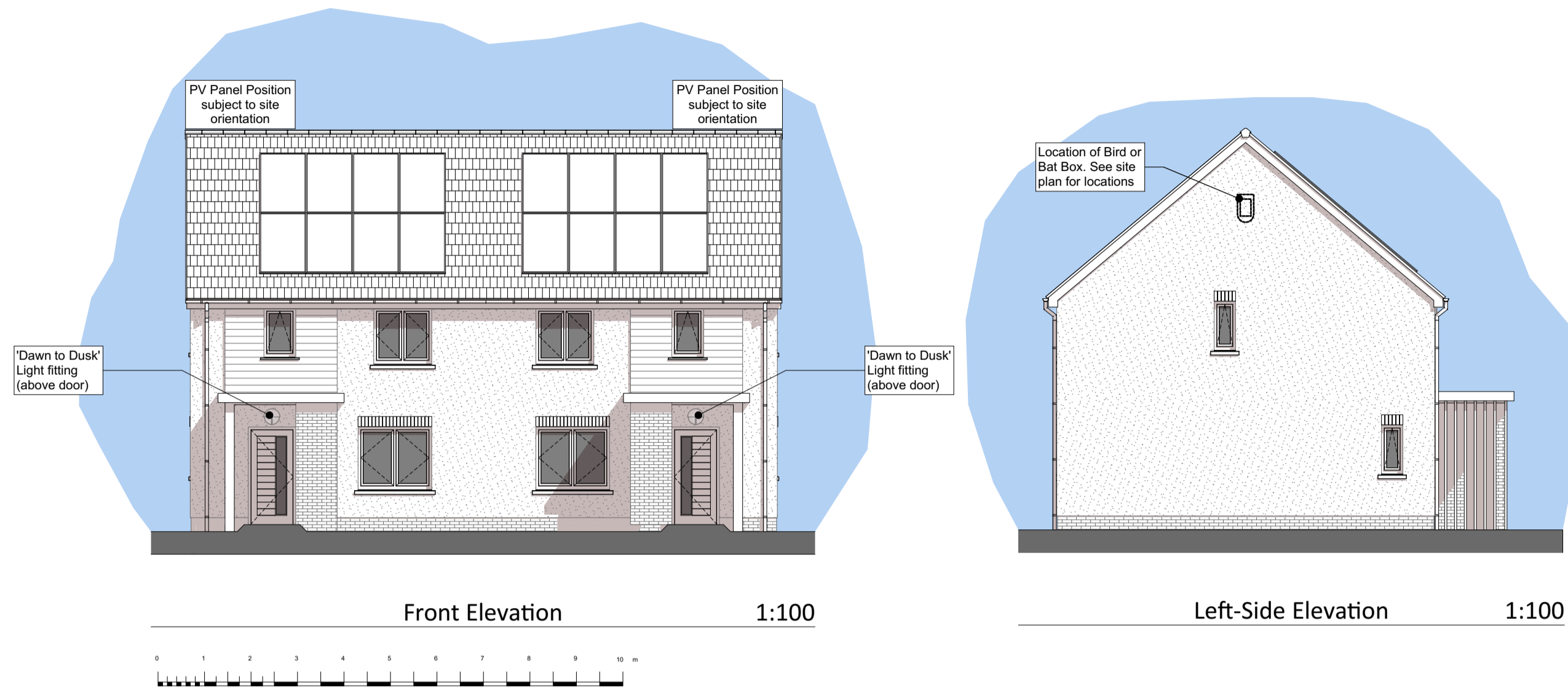


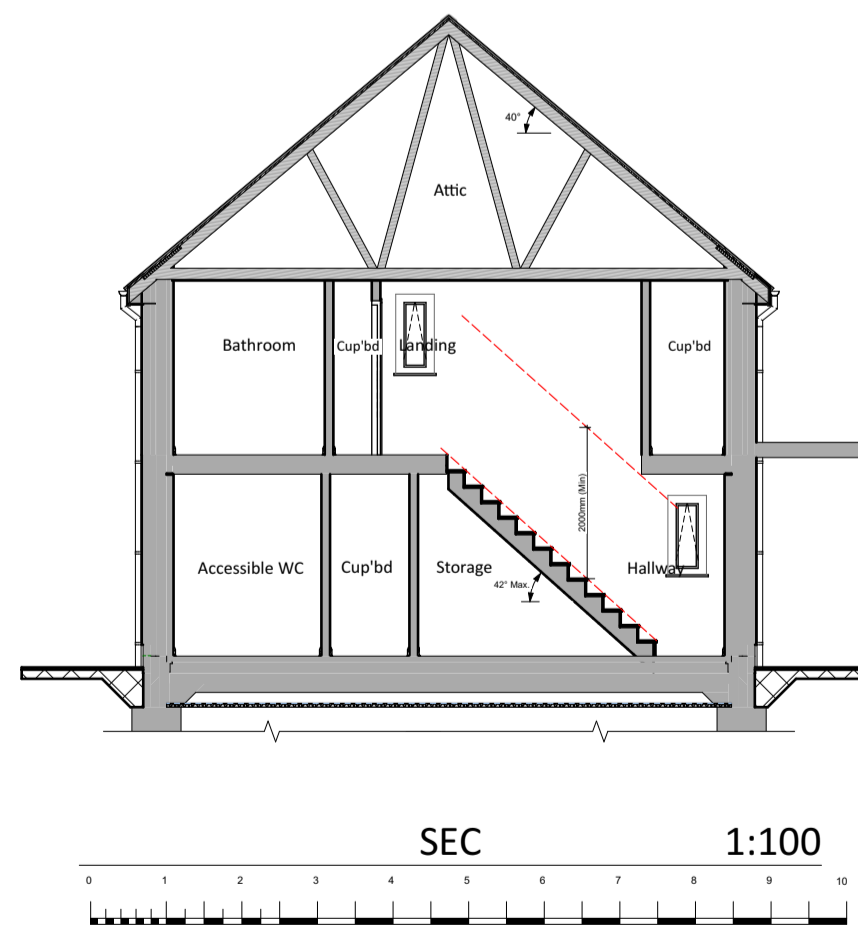
Former Coedmore CP School, Cwmann, Lampeter SA48 8ET

"Sketch Scheme Drawings" - 4P2B Semi-Detached House



Floor Areas:
 Total Gross Internal Ground Floor Area = 41.833m² (450.286sqft)
 Total Gross Internal First Floor Area = 41.833m² (450.286sqft)
 Total Gross Internal Area = 83.666m² (900.573sqft)

Storage Areas:
 (Storage areas highlighted in light green colour)
 [Required Storage Space = 2.5m²]
 Ground Floor Storage Area = 1.42m²
 First Floor Storage Area = 1.364m²
 Total dwelling Storage Area = 2.78m²



Revision:	Date:	By:	Notes:
			1. To be read in conjunction with 'proposed house type & site external finishes drawing' dwg. no. R533 SK-**.

Notes:
 1. To be read in conjunction with 'proposed house type & site external finishes drawing' dwg. no. R533 SK-**.



Client: Barcud Housing	Scale: Noted Date: June '21 Drawn: SP/MG	Drawing Title: SKETCH SCHEME DRAWINGS - 4P2B 83M ² Semi-Detached House Floor Plans, Elevations & Section
Job Title: Former Coedmore CP School, Cwmann, Lampeter SA48 8ET	R533-SK08-	