



Rear Elevation
1:200



Left Elevation
1:200



Front Elevation
1:200



Right Elevation
1:200

Finishes

Walls:	Stained Timber Cladding
Windows:	Timber (Painted)
Roof:	Rubbertech Recycled Rubber Roof
Doors:	Timber (Painted)
Balustrades:	Glass
Rainwater Goods:	Lindab
Planters & Plinths:	Blue Black Engineering
Amenity Areas:	Paving & Astroturf
Parking Bays:	Permeable Surfacing
	Stained Glass Solar PV Wall
	Roof Mounted Solar Panels
	Astroturf
	Paving

GA Plan Key

This GA Plan indicates the allocation of parking spaces, open amenity space and external storage to each flat.

- Flat 1
- Flat 2
- Flat 3
- Flat 4
- Flat 5
- Flat 6
- Flat 7
- Flat 8
- Flat 9

Rev.	Initial	Description	Date
D	LC	Finishes updated, Left & Right Elevations Shown, Height added	03/11/20
C	SL	Client Amendments	30/10/20
B	LC	Logo Removed	27/10/20
A	LC	Scheme Proposals	23/10/20

Rev.	Initial	Description	Date
------	---------	-------------	------

Status

- For discussion
- For approval
- For construction



Job Title
Garage Site
Heol Dinas
Penparcau
Aberystwyth
SY23 1SL

Drawing Title
Proposed Development
Elevations & GA Plan

Drawing Type
Planning Drawing

Scale for Planning Purposes
Report any discrepancies to Trevor Hopkins Associates Ltd.

© All rights, including copyright, in the content of this document are owned or controlled for these purposes by Trevor Hopkins Associates Ltd. Except where expressly stated otherwise, you are not permitted to copy, reproduce, adapt or change in any way the content of this document for any other purpose whatsoever without the prior written permission of Trevor Hopkins Associates Ltd.

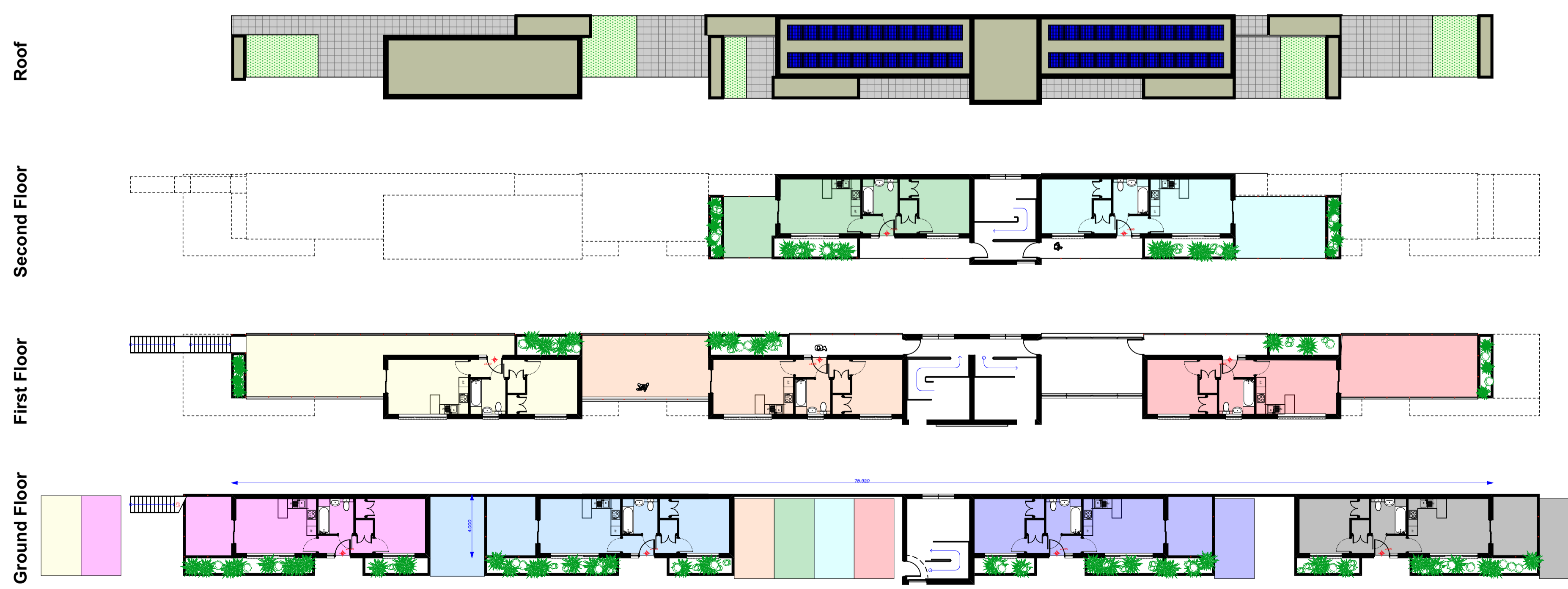
Drawing Number P-1492	Revision D	Sheet 02
----------------------------------------	-----------------------------	---------------------------

(01239) 621010
@ design@trevorhopkins.com



Trevor Hopkins Associates
Parc House, Parc Teifi, Cardigan, Ceredigion, SA43 1EW

Users\ecole\T\A\Dropbox\T\A\Files\Drawings\02_T\Cardigan\1492 - Heol Dinas\Planning\P-1492D-2.ppt Original: A1



GA Plan
(Parking & Amenity Allocation)
1:200